



# Logitech G435 Headset Manual: Comprehensive User Guide & Instructions

[Home](#) » [Logitech](#) » **Logitech G435 Headset Manual: Comprehensive User Guide & Instructions**

The Logitech G435 Headset Manual is a comprehensive user guide and instruction manual for the Logitech G435 Wireless Gaming Headset. The manual provides detailed information on the headset's features, including how to connect to your PC, Mac, PlayStation 5, or 4 with LIGHTSPEED Wireless Technology and Bluetooth, how to switch between LIGHTSPEED and Bluetooth, how to power on and off, and how to mute and unmute the microphone. The manual also includes information on battery check, sidetone, spare parts, recycling, and FAQs. The Logitech G435 Headset is a lightweight gaming headset that offers high-quality audio and noise cancellation. It features dual beamforming microphones and compatibility with Dolby Atmos, Tempest 3D AudioTech, and Windows Sonic. The Logitech G435 Headset is designed for gamers who want a comfortable and versatile headset that can be used for gaming, music, and phone calls. The manual is easy to follow and provides step-by-step instructions for setting up and using the headset.

## Contents [ [hide](#) ]

- [1 Logitech G435 Wireless Gaming Headset User Guide](#)
- [2 WHAT IS IN BOX](#)
- [3 LIGHTSPEED CONNECTION](#)
- [4 BLUETOOTH CONNECTION](#)
- [5 SWITCH BETWEEN LIGHTSPEED AND BLUETOOTH](#)
- [6 POWER ON AND OFF](#)
- [7 MUTE / UNMUTE AND MAX VOLUME](#)
- [8 BATTERY CHECK](#)
- [9 SIDETONE](#)
- [10 SPARE PARTS](#)
- [11 RECYCLING](#)
- [12 QUESTIONS?](#)
- [13 BATTERY REMOVAL](#)
- [14 SPECIFICATION](#)
- [15 FAQs](#)
- [16 VIDEO](#)
- [17 Documents / Resources](#)
  - [17.1 References](#)
- [18 Related Posts](#)

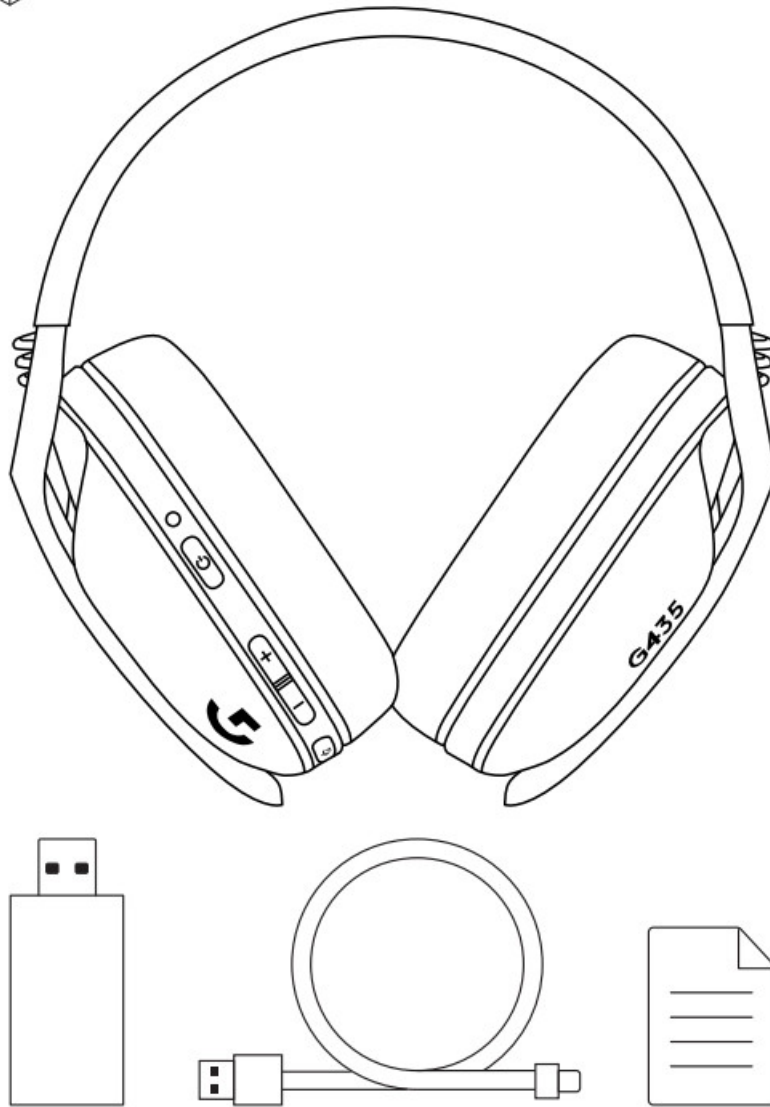


## Logitech G435 Wireless Gaming Headset User Guide



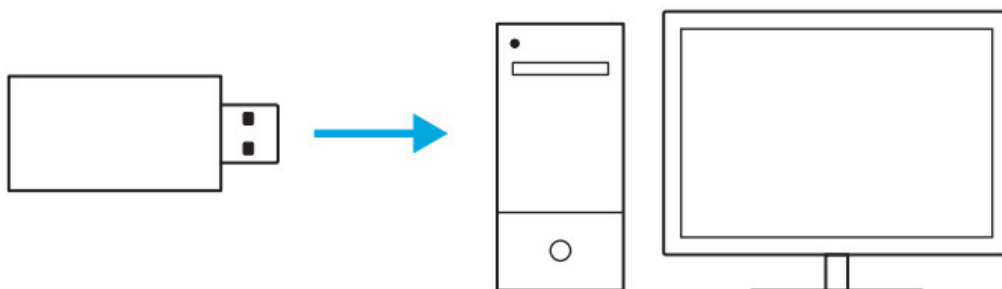
## Logitech G435 Wireless Gaming Headset User Guide

### WHAT IS IN BOX

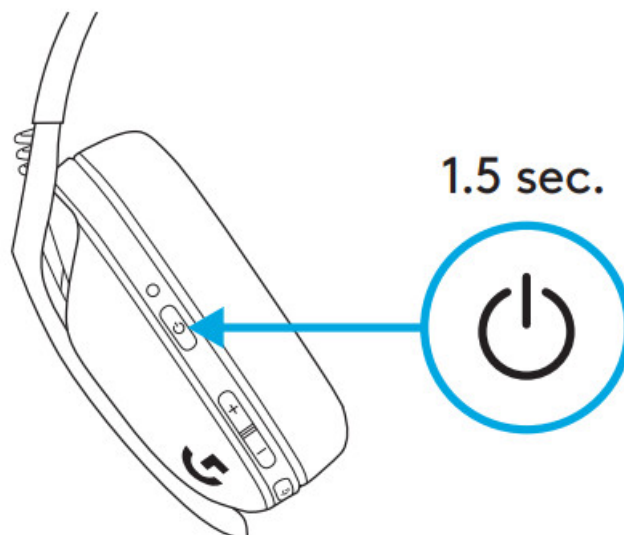


## LIGHTSPEED CONNECTION

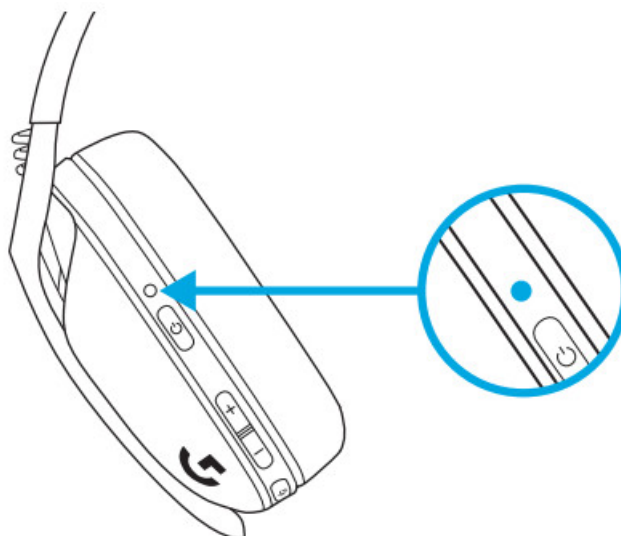
Connect to your PC, Mac, PlayStation 5, or 4 with LIGHTSPEED Wireless Technology – Insert the receiver into the USB port of your device



– Press the Power button for a minimum of 1.5 sec

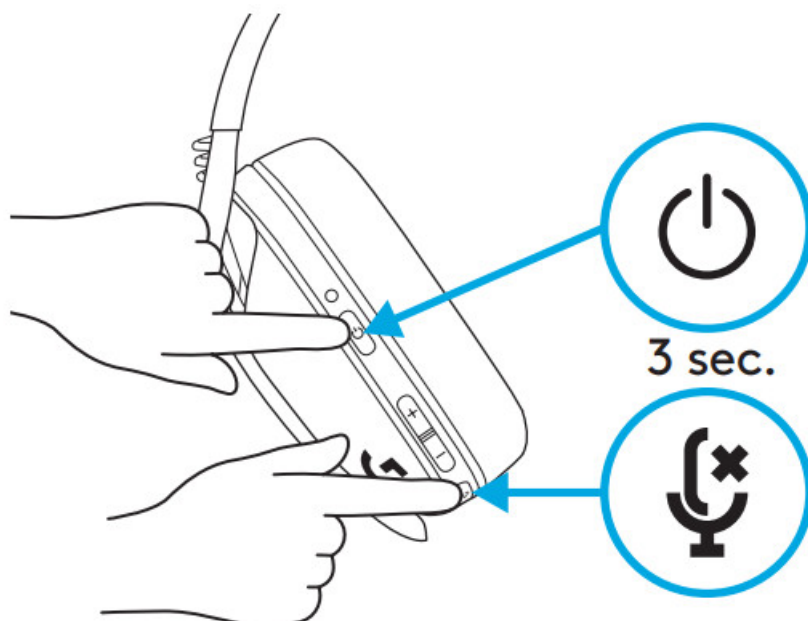


– The LED turns cyan once connected

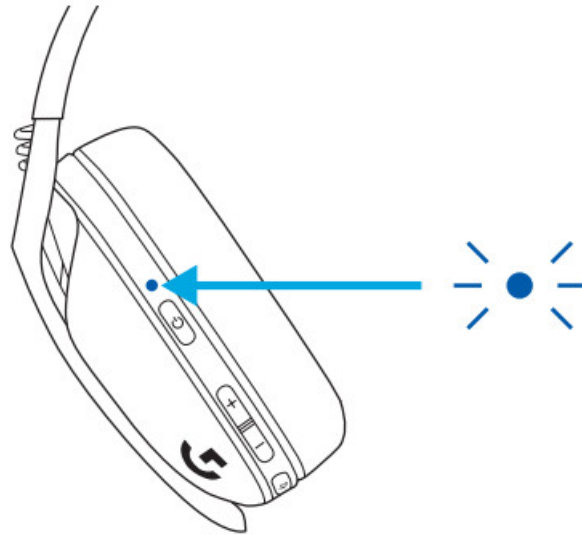


## BLUETOOTH CONNECTION

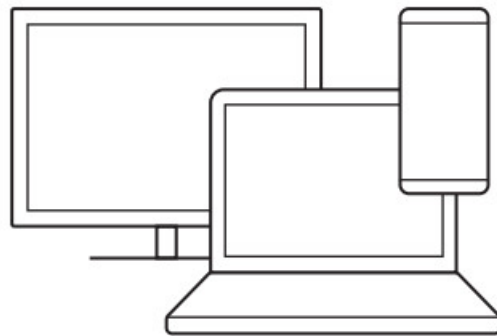
– Press 3 seconds or longer of the Power and Mute button



– LED will flash blue as it enters pairing mode



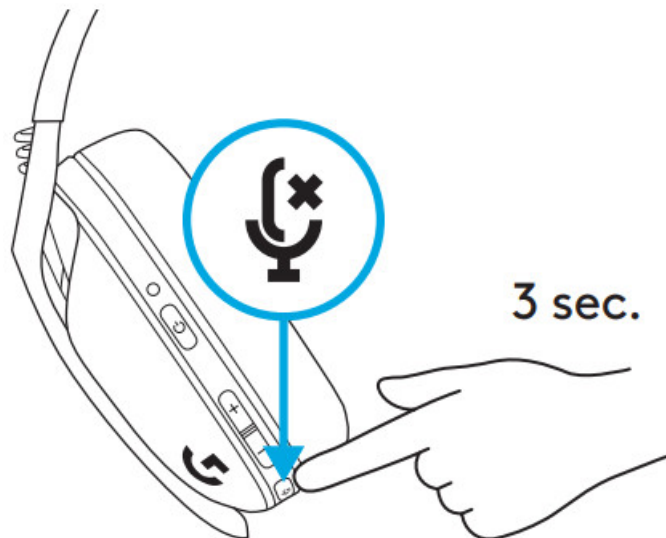
– Connect to your preferred device



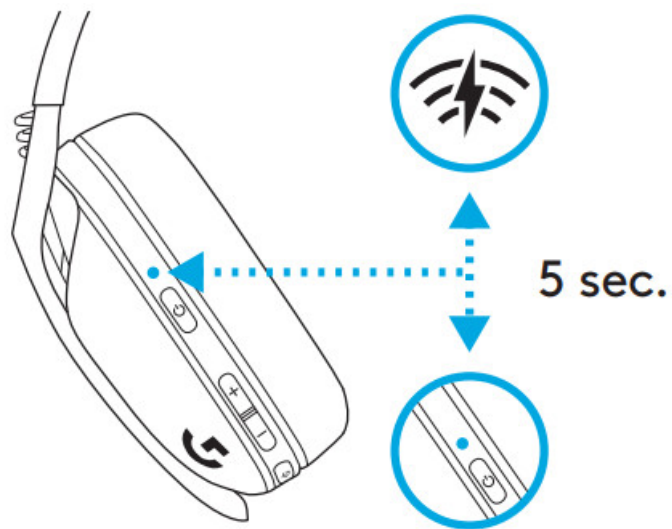
– G435 can connect to a single Bluetooth device at a time

### SWITCH BETWEEN LIGHTSPEED AND BLUETOOTH

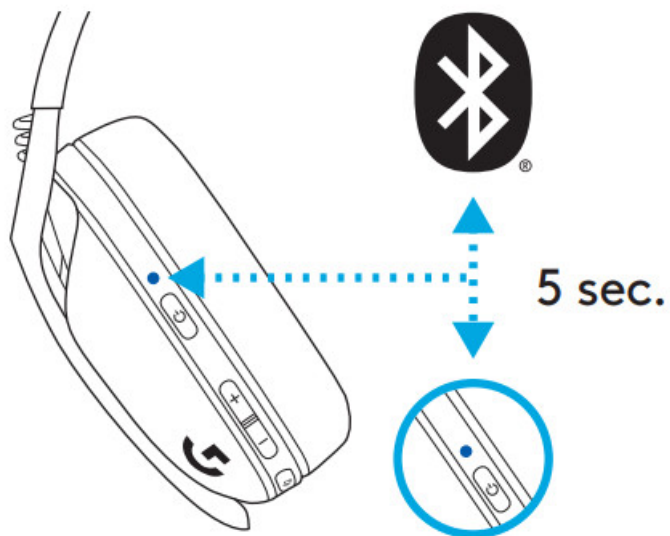
– Press 3 seconds or longer of the Mute button



– Switch to LIGHTSPEED, LED will light cyan for 5 seconds |

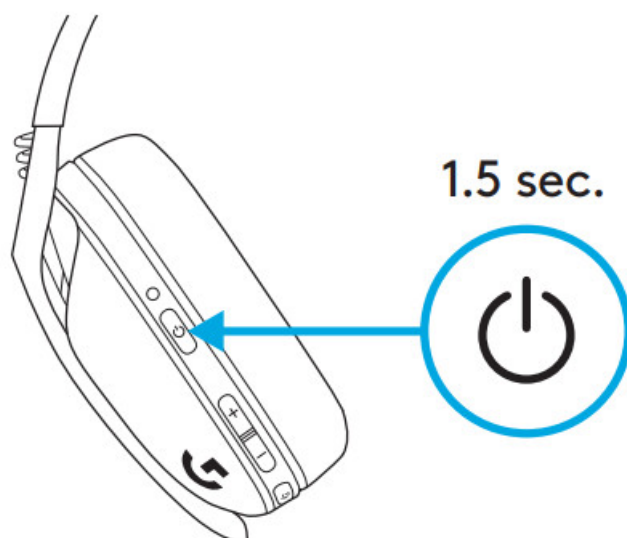


– Switch to Bluetooth, LED will light blue for 5 seconds

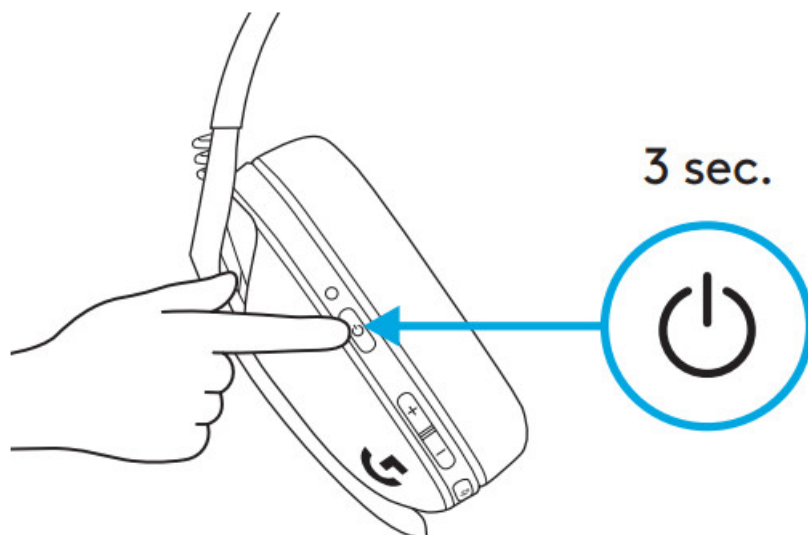


## POWER ON AND OFF

Power ON – Press the Power button for 1 5 seconds when the headset is OFF



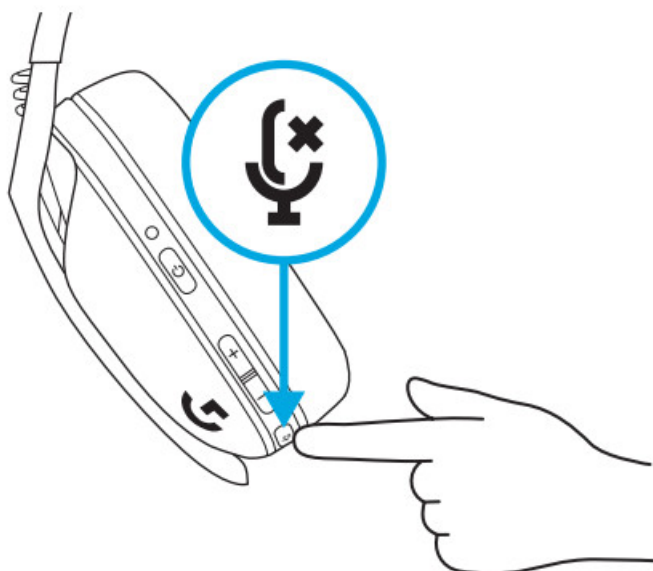
Power OFF – Press the Power button for 3 seconds when the headset is ON



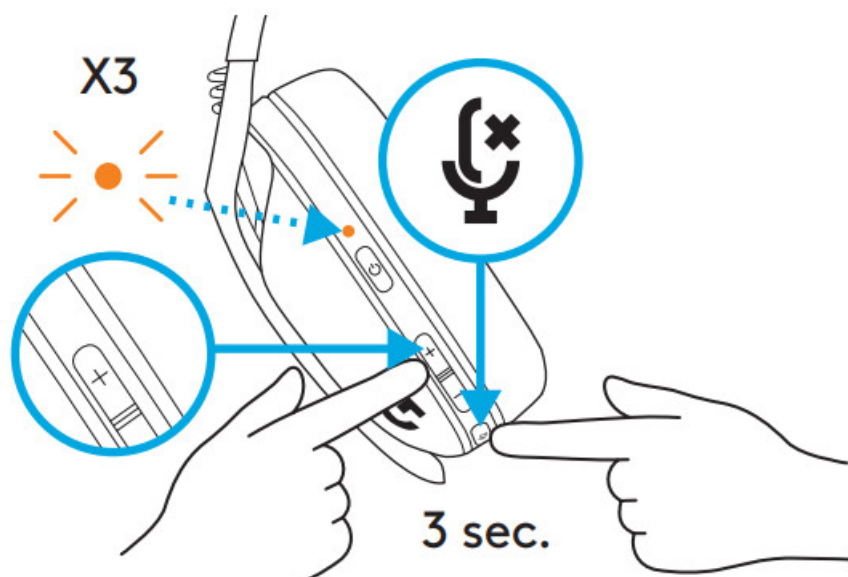
Auto Shutoff – After 30 minutes of inactivity

## MUTE / UNMUTE AND MAX VOLUME

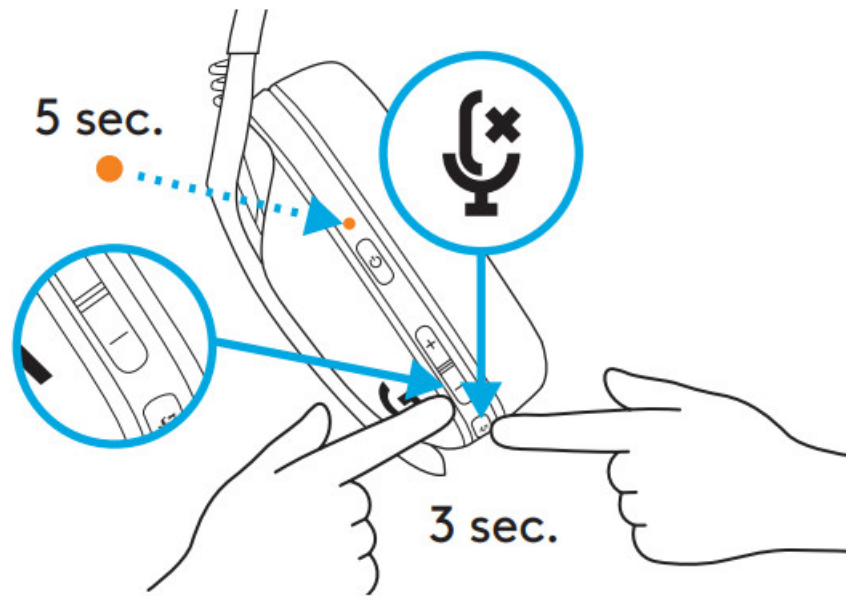
MUTE / UNMUTE microphone – Short press on the Mute button



Set Max Volume – Set to 100 dB – Press 3 seconds or longer Mute button + Volume UP – LED will flash orange 3 times

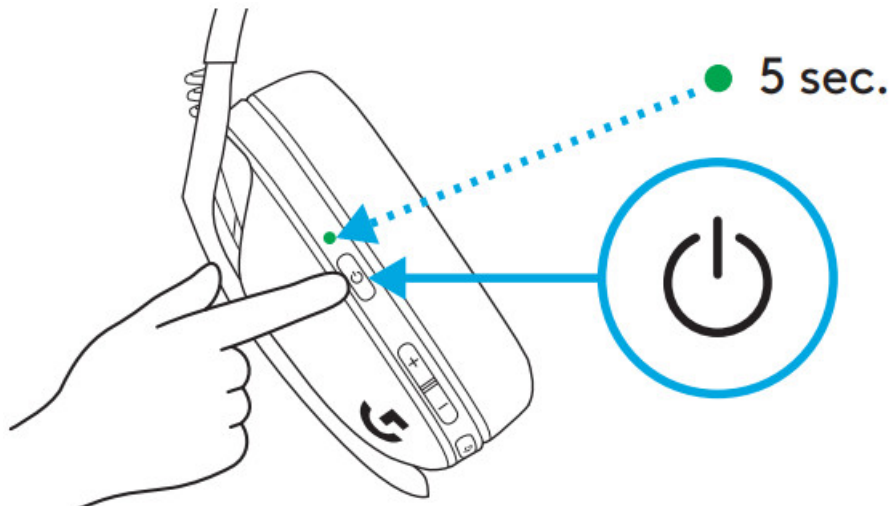


– Set to 85 dB – Press 3 seconds or longer Mute button + Volume DOWN – LED will turn solid orange for 5 seconds

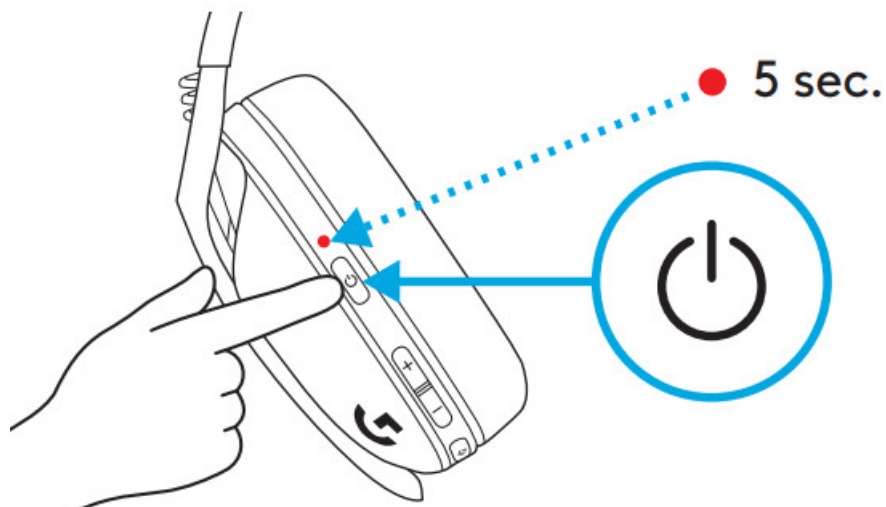


## BATTERY CHECK

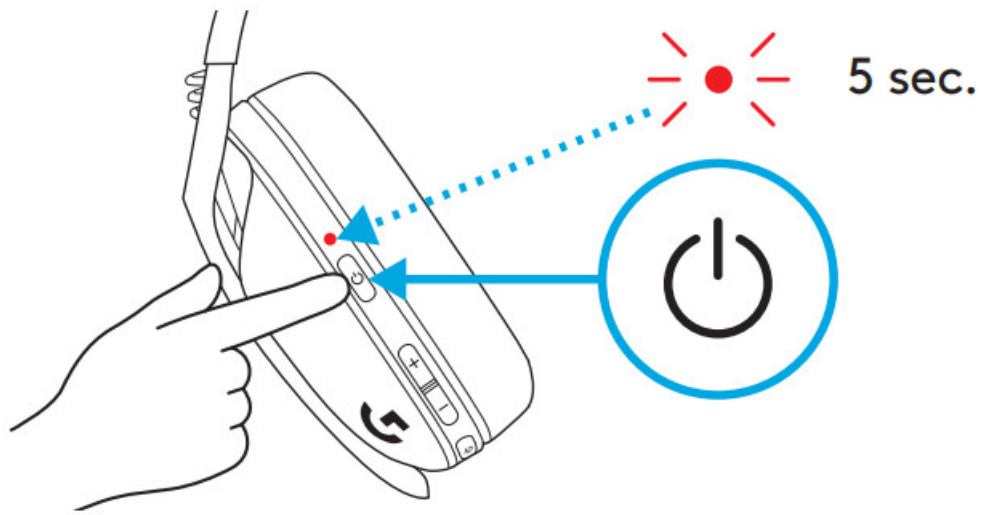
– Single press the Power button, when the headset is ON – Battery 31% to 100% the LED will show green for 5 seconds



– Battery 15% to 30% the LED will show red for 5 seconds

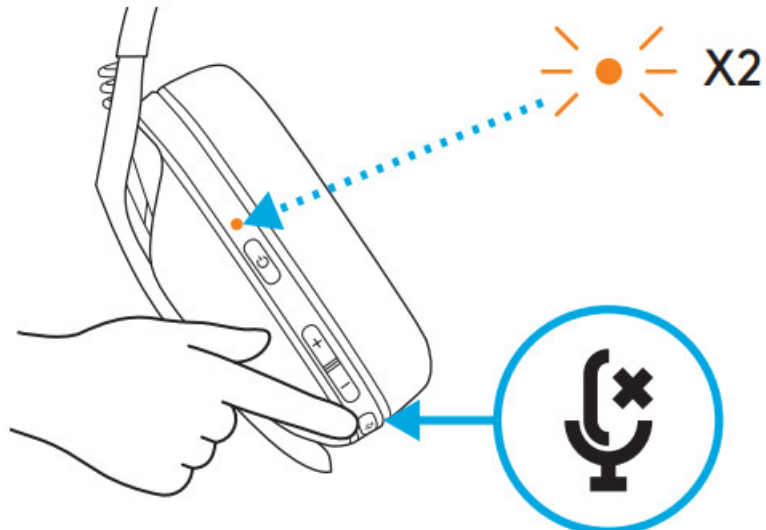


– Battery <15% the LED will flash red for 5 seconds

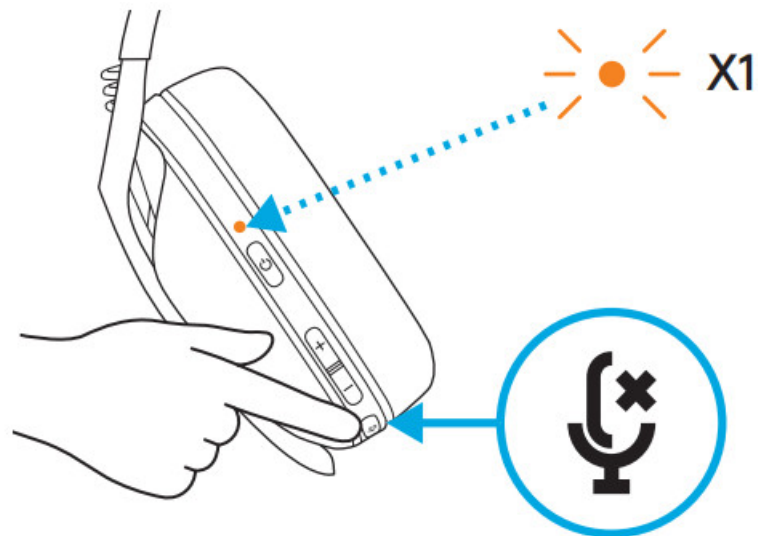


## SIDETONE

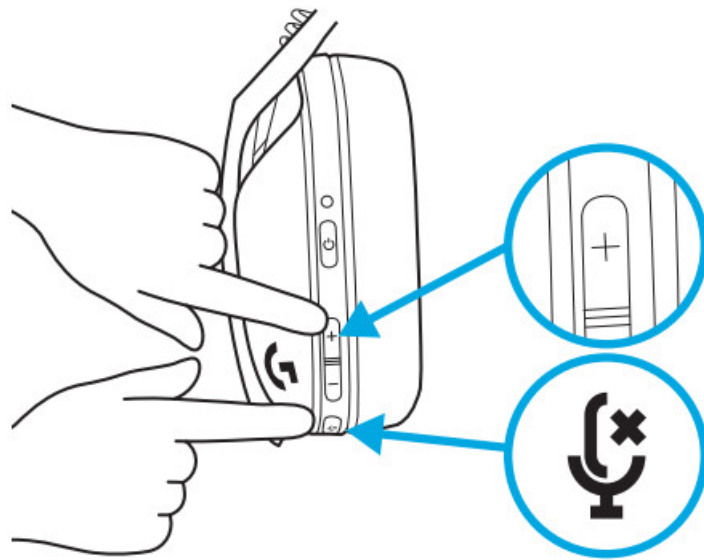
Sidetone lets you hear your voice while communicating with other people, It mirrors the experience of talking on a phone and allows you to adjust your speaking volume to a proper level – Enable Sidetone – Double press the Mute button and the LED will flash twice in orange



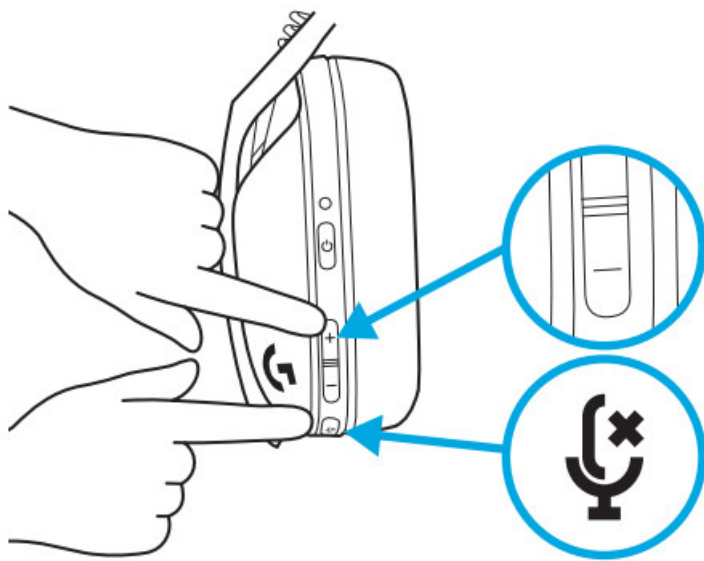
– Disable Sidetone – Double press the Mute button and the LED will flash once in orange



– Adjust Sidetone – UP = Single press Mute button + Volume UP



– DOWN = Single press Mute button + Volume DOWN



## SPARE PARTS

– Earpads – Wireless USB Receiver – Charging Cable

## RECYCLING

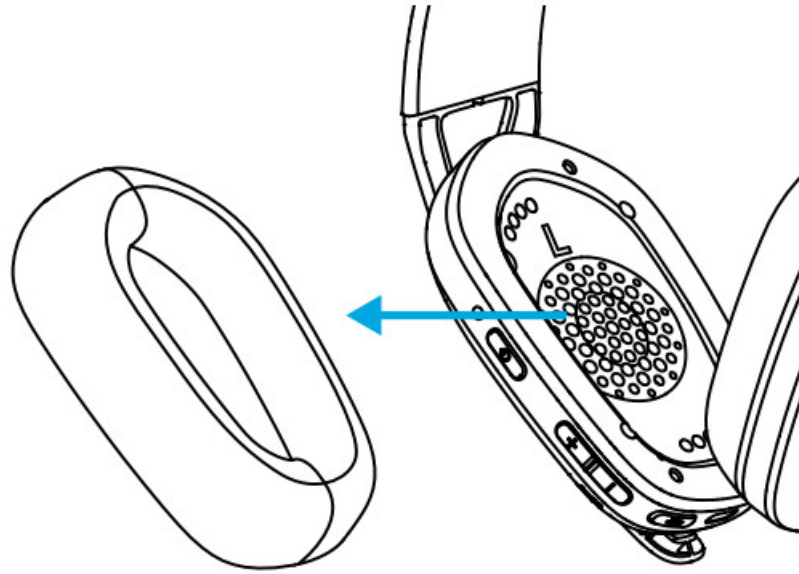
We encourage you to resell or donate working products. Otherwise, batteries, electronic and electrical equipment should not be disposed of with household waste. Wherever possible, they should be segregated and brought to an appropriate collection point to enable recycling and avoid potential impacts on the environment and human health. For more information, contact your local authorities or place of purchase, or visit [www.logitech.com/recycling](https://www.logitech.com/recycling)

## QUESTIONS?

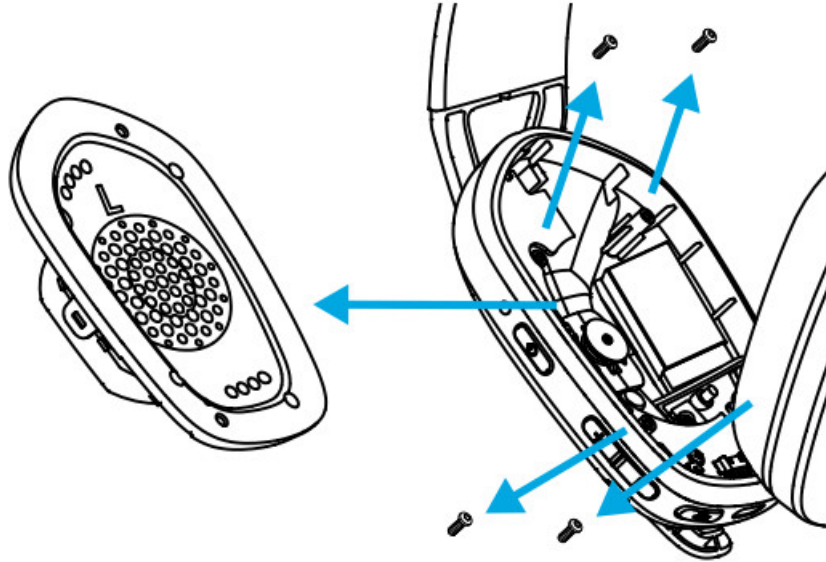
[logitech.com/support/G435](https://logitech.com/support/G435)

## BATTERY REMOVAL

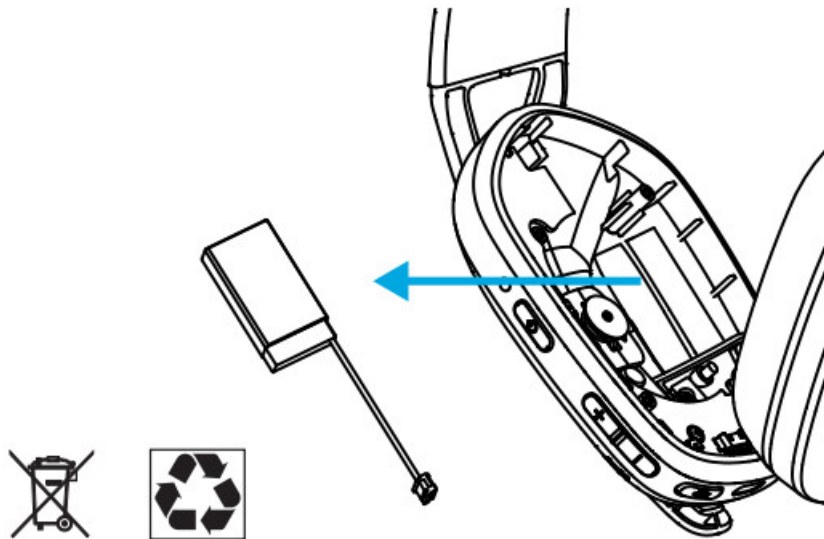
1



2



3



## SPECIFICATION

Product Specifications	Description
Connection Type	LIGHTSPEED Wireless Technology and Bluetooth
Compatibility	PC, Mac, PlayStation 5, PlayStation 4, devices with Bluetooth audio connectivity
Microphone	Built-in dual beamforming microphones
Sound Quality	Stereo sound, compatibility with Dolby Atmos, Tempest 3D AudioTech, and Windows Sonic
Noise Cancellation	Yes
Battery Life	Up to 18 hours
Charging Port	USB-C to USB-A charging cable
Weight	165 grams
Additional Features	Sidetone, mute/unmute button, max volume control, battery check, auto shutoff, compatibility with Discord, spare parts (earpads, wireless USB receiver, charging cable)

## FAQS

### Is there a mute button?

Yes, there is a mute button for Logitech G435 Lightspeed and Bluetooth Wireless Gaming Headset, which you can find below the power button.

### The colors listed here have different weights. What weight are these? Are the colors different weights?

No, the weight for the G435 Lightspeed Gaming headset does not differ with the color of the headset. It weighs 165 grams.

### works with switch ,xbox and tv ?

The Logitech G435 Lightspeed and Bluetooth Wireless Gaming Headset work with the below-mentioned requirements:

- Window® 10 or later
- macOS X 10.14 or later
- PlayStation 5, or PlayStation 4

### **Does the G435 work with a PS4?**

Yes, it does.

### **Does the G435 work with a Mac?**

Yes, it does.

### **Does the G435 work with a PC?**

Yes, it does.

### **Can you use both bluetooth and lightspeed connection at the same time? to take calls or listen to music from a phone while gaming on lightspeed**

The physical specification of G435 Gaming Headset are:

COMPATIBILITY:

LIGHTSPEED Wireless: USB 2.0 port (type A port). PC with window 10 or later, macOS? X 10.14 or later, PlayStation 5, or PlayStation 4

Bluetooth: Devices with Bluetooth audio connectivity

Hence, it will not work on the phone. Also, both the connection cannot be used at the same time.

### **Can this headset be used while charging?**

The G435 can be used while charging. However, the lightspeed receiver would still have to be plugged in as these headsets do not work with the charging cable for sound output.

### **Can this headset be used while charging?**

The G435 can be used while charging. However, the lightspeed receiver would still have to be plugged in as these headsets do not work with the charging cable for sound output.

### **What type of charging port does it have?**

G435 consists of USB-C to USB-A charging cable.

### **do these have a microphone so i can hear and talk to someone from my computer? i work from home needing something that i can do call center work with**

yes there is a small microphone built into the headset. There is no swing arm. You can spot the mic in the above image by the G435 insignia

### **What is the meaning of the beep with these headphones?**

The Beep sound indicates max volume mute and unmute indications in the Logitech G435 LIGHTSPEED and Bluetooth Wireless Gaming Headset.

### **Is playback in mono or stereo ?**

Yes, the Logitech G435 Lightspeed and Bluetooth Wireless Gaming Headset is a Stereo Sound. Discord certified, G435 features 40mm audio drivers and compatibility with Dolby Atmos, Tempest 3D AudioTech and Windows Sonic.

**Do these have noise cancellation?**

Yes. With built-in dual beamforming mics, G435 drops the mic arm while reducing the background noise.

**Does this work with a Xbox One S?**

No, G435 doesn't work with a Xbox One S.

**Can you plug in the lightspeed adapter to a usb c port with an adapter?**

You can plug in the lightspeed adapter to a USB-C port with an adapter, however, we do not recommend it as this may hinder the performance.

**Where is the usb**

It's hidden in the small box that had the wires and papers.

**How do I install it**

Logitech G435 Lightspeed and Bluetooth Wireless Gaming Headset is a plug-and-play device and hence doesn't require any software (drivers).

**How do I install the Logitech G435 Wireless Gaming Headset?**

The Logitech G435 Wireless Gaming Headset is a plug-and-play device and does not require any software or drivers.

**Where is the USB receiver for the Logitech G435 Wireless Gaming Headset?**

The USB receiver for the Logitech G435 Wireless Gaming Headset is hidden in the small box that contains the wires and papers.

**Can the Logitech G435 Wireless Gaming Headset work with Xbox One S?**

No, the Logitech G435 Wireless Gaming Headset does not work with Xbox One S.

**Does the Logitech G435 Wireless Gaming Headset have noise cancellation?**

Yes, the Logitech G435 Wireless Gaming Headset has noise cancellation with built-in dual beamforming microphones.

**Is the playback in mono or stereo?**

The playback on the Logitech G435 Wireless Gaming Headset is in stereo.

**Does the Logitech G435 Wireless Gaming Headset have noise cancellation?**

Yes, the Logitech G435 Wireless Gaming Headset has noise cancellation with built-in dual beamforming microphones.

**Does the Logitech G435 Wireless Gaming Headset have a microphone?**

Yes, the Logitech G435 Wireless Gaming Headset has a small built-in microphone.

**What type of charging port does the Logitech G435 Wireless Gaming Headset have?**

The Logitech G435 Wireless Gaming Headset has a USB-C to USB-A charging cable.

**Can I use both Bluetooth and LIGHTSPEED connection at the same time?**

No, you cannot use both Bluetooth and LIGHTSPEED connection at the same time.

**Can the Logitech G435 Wireless Gaming Headset be used while charging?**

Yes, the Logitech G435 Wireless Gaming Headset can be used while charging.

### What devices can the Logitech G435 Wireless Gaming Headset connect to?

The Logitech G435 Wireless Gaming Headset can connect to PC, Mac, PlayStation 5, or 4 with LIGHTSPEED Wireless Technology and Bluetooth.

### How do I switch between LIGHTSPEED and Bluetooth connection?

To switch between LIGHTSPEED and Bluetooth connection, press and hold the Mute button for 3 seconds or longer. The LED will light cyan for 5 seconds to switch to LIGHTSPEED, and blue for 5 seconds to switch to Bluetooth.



<https://manuals.plus/wp-content/uploads/2021/10/Logitech-G435-Wireless-Gaming-Headset.mp4>

Reference: [logitech G435 Gaming Headset User Guide](#)



[www.logitechg.com](http://www.logitechg.com)

### Documents / Resources

	<a href="#">logitech G435 Wireless Gaming Headset</a> [pdf] User Guide G435, Wireless Gaming Headset
	<a href="#">logitech G435 Wireless Gaming Headset</a> [pdf] User Guide G435 Wireless Gaming Headset, G435, G435 Gaming Headset, Wireless Gaming Headset, Gaming Headset, Wireless Headset, Headset
	<a href="#">logitech G435 Wireless Gaming Headset</a> [pdf] User Guide G435, G435 Wireless Gaming Headset, Wireless Gaming Headset, Gaming Headset, Headset

### References

- [Logitech Support + Download](#)
- [Global Recycling Program for Ewaste and Batteries - Logitech](#)
- [Global Recycling Program for Ewaste and Batteries - Logitech](#)

